

# LH

LUXURY  
HOME  
QUARTERLY

# Q

The  
**CHICAGO**  
ISSUE

## |TRENDS|

HOME FURNISHING CONCEPTS EN VOGUE

# COMPLEX GEOMETRY

*MULTI-FACED FORMS  
ON THE CUTTING EDGE*

"Crystalline" series by Hariri & Hariri for AF Supply; [afnewyork.com](http://afnewyork.com).





## WILTON POOLHOUSE

Located in Wilton, Connecticut as part of a 3.5-acre property, the Wilton Poolhouse makes striking sculptural form out of what could have merely been utilitarian space. This is not a changing room where one goes before a swim. It creates the kind of space where one will linger, even without getting wet.

The entire pool area acts as a sunken courtyard extending from the house, paved in sumptuous Italian travertine. The boxy poolhouse itself is comprised of a living, dining and entertaining area on the inside, clad a with series of metal and glass panels that can be opened to the outside. These connections continue with an indoor/outdoor shower area festooned with green mosaic tiles, which shimmer along with the water outside. The main structural form is the roof, clad in Brazilian ipé wood, which forms the ceiling and then extends to the ground at a gentle angle, forming an awning and wall. The nautical material and form faintly recall a yacht as the building hovers at the pool's edge. Interior wood floors extend outside to become a pool deck. On the south side of the structure, the ipé wall has a rectangular opening that looks out to a fire pit on the edge of the terrace. The fire pit, also made from travertine, sinks into the surrounding terrace so as to highlight the theatrical, inviting fire emanating from within, making it ideal for gatherings on cooler Connecticut summer nights.

—BRIAN LIBBY



### Credits

ARCHITECT:  
Hariri & Hariri

DESIGN TEAM:  
Gisue Hariri  
Mojgan Hariri  
Markus Randler

STRUCTURAL  
ENGINEERING:  
Robert Silman &  
Associates, P.C.

SURVEYOR:  
Ryan and Faulds,  
LLC

GENERAL  
CONTRACTOR:  
Willow Woodworking,  
John Larkin, Walter Giewat

POOL CONTRACTOR:  
All American Pools

# HIGH-RISE

TAKING LUXURY TO NEW HEIGHTS



## Park Millennium Tower Penthouse

Hariri & Hariri's Park Millennium Tower penthouse matches its high-tech controls for audio/video, lighting and shades with standout interior pieces. A Swarovski ([swarovski.com](http://swarovski.com)) crystal chandelier hangs over the dining table. "It almost looks like a horizontal skyscraper," Gisue Hariri says. Most of the furniture is from Holly Hunt New York, designed by Christian Liaigre ([hollyhunt.com](http://hollyhunt.com)). The dining table and coffee tables were made by Ralph Pucci International ([ralphpucci.net](http://ralphpucci.net)).

## Hariri & Hariri

IRANIAN-BORN SISTERS SHOW THE INTERCONNECTEDNESS OF DESIGN AT ALL SCALES

by Brian Libby

In the late 1970s, Gisue and Mojgan Hariri were studying in America when revolution transformed their homeland of Iran. The sisters decided to stay stateside, quickly showing a complementary design prowess that led them to the nation's top-ranked architecture school, Cornell, and internships with leading firms. "We decided it was perhaps a blessing," Gisue Hariri recalls. "We'd wanted to learn all the skills, hoping to help build Iran. But beginning from scratch in another country, you become tougher and more independent. You have to work very hard."

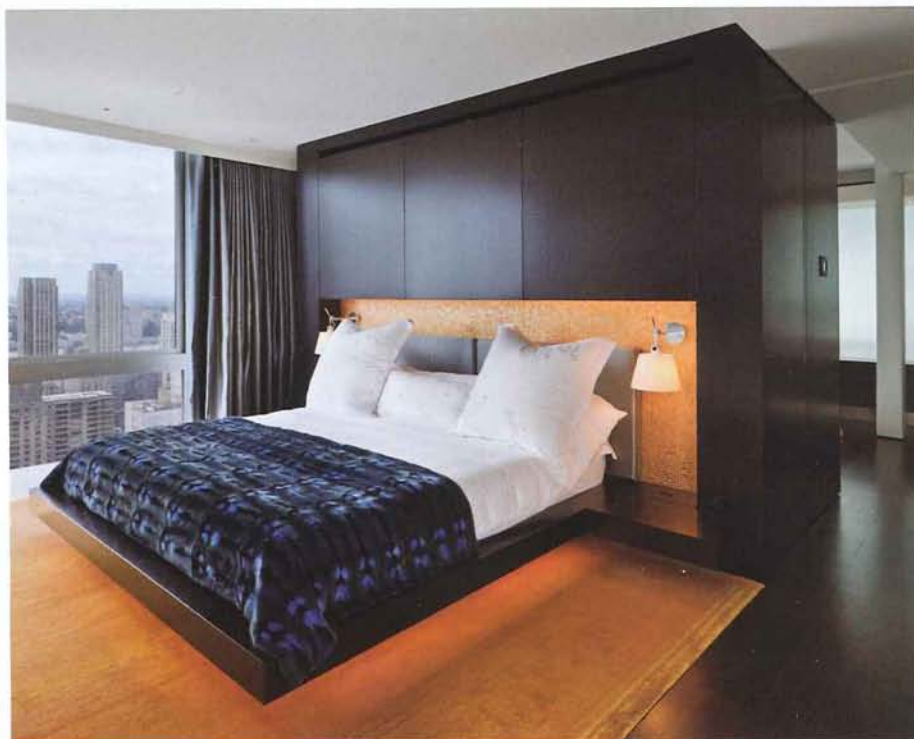
From an early age, Gisue and Mojgan quickly came to see their partnership as greater than the sum of

its parts. "I think we pushed each other's boundaries. Each project became phenomenally better," Gisue says. "It wasn't just hard work, but a continuation of our childhood dialogue. Because there is no ego involved, it becomes about design."

Today, that same collaborative and passionate spirit informs a range of Hariri & Hariri projects, from large-scale master-planning and architecture, to product design including chandeliers, jewelry and bath fixtures. What's more, the sisters take pride in an open office culture that encourages its six employees to view design holistically. "We do a lot of brainstorming, a lot of sketching, until it sits well for both of us," Gisue says. "We really encourage

all our staff and interns and architects not only to come up with ideas and discuss them with us, but also to feel the freedom to criticize our thinking. Our office has always remained small so we can all learn everything: thinking about an idea first, coming up with a concept, and learning how that translates into construction. You become one big team."

The Hariri & Hariri-designed Park Millennium Tower penthouse exemplifies the firm's interconnected approach to interiors, architecture, sustainability and technology. Located on the 45th-floor



*On the Horizon*

Salzburg Sternbrauerei (bottom) is one of Hariri & Hariri's biggest projects yet, the commission won an international design competition. Luxury apartments, restaurants and an art gallery are nestled together in a former quarry. Other upcoming projects include: Two Arts Plaza (top), a luxury high-rise residential tower in Dallas with its own park. "You see how architecture extends itself from the small details to a larger urban scale," Gisue Hariri says. "It's a path we always wanted to follow."

*"Our office has always remained small so we can all learn everything: thinking about an idea first, coming up with a concept and learning how that translates into construction. You become one big team."*

GISUE HARIRI, PRINCIPAL



on Manhattan's Upper West Side, one could be forgiven for staring endlessly at the panoramic view of the Hudson River, Central Park and the Lincoln Center. Yet the array of comforts and toys seamlessly tucked inside may be just as engrossing.

Digital keypads in the penthouse give occupants the ability to control lighting, heating and cooling, audio and video systems and window shading. At the same time, materials such as radiant floors embedded with water tubing help provide an energy-efficient means of distributing ambient temperatures without solely relying on forced-air and ducts. But this is not an overly futuristic-feeling space. Whether it's in the plentiful master

bedroom suite, the open living/dining/bar area or the his-and-hers studies and bathrooms, handmade details such as Tibetan carpets, glass mosaic tiles, silk drapery and an array of artwork celebrate human touch and creativity. Richly toned wenge wood and sleek translucent glass lit with LEDs provide a continuing contrast of natural and modern. For inspiration, Hariri & Hariri looked to the past: the art deco style popularized in the 1930s with its fusion of glamour, craft and technology.

Today, Hariri & Hariri's reach is growing. The firm's first European project, Salzburg Sternbrauerei, is currently under construction, showing

their hand in its urban design and fine details. Upcoming projects also include a portable, inflatable museum called Odyssey that can be moved to display art anywhere in the world. "We decided early on we were not going to be a usual kind of office," Gisue says. "We wanted to be open and to celebrate every challenge and constraint. Whether it has geological constraints or is a difficult site to build on... we want to have an open mind. It's not about doing just houses or just hospitals or any other project type, but anything that needs creative blood." ■

A MESSAGE FROM ALL AMERICAN CUSTOM POOLS & SPAS

With more than 34 years in the business, All American Custom Pools & Spas is the most highly awarded pool company in the area for design and construction excellence. All American works closely with each client to perfect a design that complements their home while enhancing the total experience of pool ownership. The company's insistence to adhere to higher standards results in better pools and has earned All American a reputation for quality and service that is second to none.